

Ordering information

Accessories

OHBS 1_
S00684A



OHRS 2_
S01368A



OHRS 3_
S01368A



Handle knobs

Mounting directly to the switch, no shaft needed, for base and DIN-rail mounted switches
Padlockable with one padlock with bail diameter 5 mm, see the table below.

| Colour | Handle length [mm] | Type | Order number | Units/ type [pcs] |
|---|--------------------|---------|-----------------|-------------------|
| Suitable for switches OTDC16...32F | | | | |
| Black | 31 | OHBS1 | 1SCA109087R1001 | 10 |
| Black | 31 | OHBS1/1 | 1SCA109088R1001 | 1 |
| Red | 31 | OHRS1 | 1SCA109095R1001 | 10 |
| Red | 31 | OHRS1/1 | 1SCA109096R1001 | 1 |
| Suitable for switches OTDC16...32F | | | | |
| Black | 40 | OHBS2 | 1SCA109089R1001 | 10 |
| Black | 40 | OHBS2/1 | 1SCA109090R1001 | 1 |
| Red | 40 | OHRS2 | 1SCA108598R1001 | 10 |
| Red | 40 | OHRS2/1 | 1SCA108599R1001 | 1 |
| Black | 39 | OHBS3 | 1SCA108320R1001 | 10 |
| Black | 39 | OHBS3/1 | 1SCA108319R1001 | 1 |
| Red | 39 | OHRS3 | 1SCA108667R1001 | 10 |
| Red | 39 | OHRS3/1 | 1SCA108688R1001 | 1 |

Special information for handle knobs

| Handle type | Padlockable | Shaft through the handle | 45 mm cut-out enable* |
|----------------|-------------|--------------------------|-----------------------|
| OHBS1_, OHRS1_ | No | No | Yes |
| OHBS2_, OHRS2_ | Yes | No | Yes |
| OHBS3_, OHRS3_ | No | No | Yes |

* In I-position the handle shall remain within the cut-out height

Ordering information

Accessories

OH_ 1_
S00395A



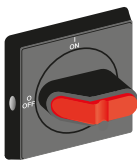
Selector type handles for base and DIN-rail mounted switches

Indication I-O and ON-OFF, for shaft diameter 6 mm, door drilling 22.5 mm.
The type and the ordering numbers are for one piece.

OH_ 3_
S00687A



OH_ 2_
S00396A



OHBS2_AJEH



| Colour | Type | Order number | Delivery batch [pcs] |
|--|-----------|-----------------|----------------------|
| IP 54 handles, NEMA 1, suitable for switches OTDC16...32F | | | |
| Black | OHBS1AH | 1SCA102680R1001 | 150 |
| Yellow-red | OHYS1AH | 1SCA105290R1001 | 150 |
| Silver | OHSS1AH | 1SCA105274R1001 | 150 |
| Grey | OHGS1AH | 1SCA105261R1001 | 150 |
| Door interlock in ON-position. | | | |
| Black | OHBS1AH1 | 1SCA105210R1001 | 150 |
| Yellow-red | OHYS1AH1 | 1SCA105291R1001 | 150 |
| Silver | OHSS1AH1 | 1SCA105275R1001 | 150 |
| Grey | OHGS1AH1 | 1SCA105262R1001 | 150 |
| Padlockable with one padlock with bail diameter 5...6.3 mm. | | | |
| Black | OHBS3AH | 1SCA105234R1001 | 150 |
| Yellow-red | OHYS3AH | 1SCA105325R1001 | 150 |
| Silver | OHSS3AH | 1SCA105283R1001 | 150 |
| Grey | OHGS3AH | 1SCA105270R1001 | 150 |
| Padlockable with one padlock with bail diameter 5...6.3 mm, door interlock in ON-position. | | | |
| Black | OHBS3AH1 | 1SCA105235R1001 | 150 |
| Yellow-red | OHYS3AH1 | 1SCA105326R1001 | 150 |
| Silver | OHSS3AH1 | 1SCA105284R1001 | 150 |
| Grey | OHGS3AH1 | 1SCA105271R1001 | 150 |
| IP 65 handles, NEMA 1, 3R, 12, suitable for switches OTDC16...32F | | | |
| Padlockable with max. 3 padlocks with bail diameter 5...8 mm, door interlock in ON-position, defeatable. | | | |
| Black | OHBS2AJ | 1SCA105213R1001 | 120 |
| Yellow-red | OHYS2AJ | 1SCA105296R1001 | 120 |
| Silver | OHSS2AJ | 1SCA105278R1001 | 120 |
| Grey | OHGS2AJ | 1SCA105265R1001 | 120 |
| Padlockable with max. 3 padlocks with bail diameter 5...8 mm, door interlock in ON-position. | | | |
| Black | OHBS2AJ1 | 1SCA105215R1001 | 120 |
| Yellow-red | OHYS2AJ1 | 1SCA105297R1001 | 120 |
| Silver | OHSS2AJ1 | 1SCA105279R1001 | 120 |
| Grey | OHGS2AJ1 | 1SCA105266R1001 | 120 |
| Selector type handle with metal hasp | | | |
| IP65 handles, NEMA 1, 3R, 12, suitable for switches OTDC16...32F | | | |
| Padlockable with max. 3 padlocks, door interlock in the ON-position, defeatable. | | | |
| Black | OHBS2AJEH | 1SCA108230R1001 | 120 |

Ordering information

Accessories

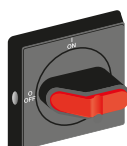
OH_1_
S00395A



OH_3_
S00697A



OH_2_
S00396A



Selector type handles, for door mounted switches

Indication I-O and ON-OFF. No separate shaft needed.
The type and the ordering numbers are for one piece.

| Colour | Type | Order number | Units/ type [pcs] |
|---|---------|-----------------|-------------------------|
| Snap-on mounting, door drilling 22,5 mm, for OTDC16...32FT | | | |
| No padlocking, IP54, NEMA 1 | | | |
| Black | OHBS1PH | 1SCA105211R1001 | 150 |
| Red-yellow | OHYS1PH | 1SCA105294R1001 | 150 |
| Silver | OHSS1PH | 1SCA105276R1001 | 150 |
| Grey | OHGS1PH | 1SCA105263R1001 | 150 |
| Padlockable with one padlock, IP54, NEMA 1 | | | |
| Black | OHBS3PH | 1SCA105236R1001 | 150 |
| Red-yellow | OHYS3PH | 1SCA105327R1001 | 150 |
| Silver | OHSS3PH | 1SCA105285R1001 | 150 |
| Grey | OHGS3PH | 1SCA105272R1001 | 150 |
| Padlockable with max. 3 padlocks, IP65, NEMA 1, 3R, 12 | | | |
| Black | OHBS2PJ | 1SCA105231R1001 | 120 |
| Red-yellow | OHYS2PJ | 1SCA105322R1001 | 120 |
| Silver | OHSS2PJ | 1SCA105280R1001 | 120 |
| Grey | OHGS2PJ | 1SCA105268R1001 | 120 |
| Screw mounting, hole distance 36 mm, for OTDC16...32FT | | | |
| No padlocking, IP54, NEMA 1 | | | |
| Black | OHBS1RH | 1SCA105212R1001 | 150 |
| Red-yellow | OHYS1RH | 1SCA105295R1001 | 150 |
| Silver | OHSS1RH | 1SCA105277R1001 | 150 |
| Grey | OHGS1RH | 1SCA105264R1001 | 150 |
| Padlockable with one padlock, IP54, NEMA 1 | | | |
| Black | OHBS3RH | 1SCA105237R1001 | 150 |
| Red-yellow | OHYS3RH | 1SCA105328R1001 | 150 |
| Silver | OHSS3RH | 1SCA105286R1001 | 150 |
| Grey | OHGS3RH | 1SCA105273R1001 | 150 |
| Padlockable with max. 3 padlocks, IP65, hole distance 36/48 mm, NEMA 1, 3R, 12 | | | |
| Black | OHBS2RJ | 1SCA105232R1001 | 120 |
| Red-yellow | OHYS2RJ | 1SCA105323R1001 | 120 |
| Silver | OHSS2RJ | 1SCA105281R1001 | 120 |
| Grey | OHGS2RJ | 1SCA105269R1001 | 120 |

Ordering information

Accessories

OHY_
S00836A

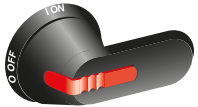


Pistol type handles

OH_ handles: IP 65, NEMA 1,3R, 12

Padlockable with three padlocks in OFF-position, door interlock in ON-position. Screw fixing from the back side of the handle. No screws on the front ensures double insulation. The type and the ordering numbers are for one piece.

OHB_
S00601A



OHB_P
S02195A



| Colour | Handle length [mm] | Suitable for switches | Type | Order number | Delivery Weight/ batch [pcs] | unit [kg] |
|--|--------------------|-----------------------|------------|-----------------|------------------------------|-----------|
| For shaft diameter 6 mm, indication in types OHB and OHY: I-0, ON-OFF, in types OHG: I-0. | | | | | | |
| Black | 65 | OTDC100...250_ | OHB65J6 | 1SCA022380R9660 | 100 | 0.12 |
| Yellow-red | 65 | OTDC100...250_ | OHY65J6 | 1SCA022380R9820 | 100 | 0.12 |
| Grey | 65 | OTDC100...250_ | OHG65J6 | 1SCA022380R9740 | 100 | 0.12 |
| Black | 80 | OTDC100...250_ | OHB80J6 | 1SCA022381R0240 | 100 | 0.14 |
| Yellow-red | 80 | OTDC100...250_ | OHY80J6 | 1SCA022381R0410 | 100 | 0.14 |
| Grey | 80 | OTDC100...250_ | OHG80J6 | 1SCA022381R0320 | 100 | 0.14 |
| For shaft diameter 6 mm, indication: Test-OFF-ON/Test-0-I | | | | | | |
| Black | 65 | OTDC100...250_ | OHB65J6T | 1SCA022399R8110 | 100 | 0.12 |
| Yellow-red | 65 | OTDC100...250_ | OHY65J6T | 1SCA022456R9540 | 100 | 0.12 |
| For shaft diameter 12 mm, indication OHB and OHY: I-0, ON-OFF, in types OHG: I-0 | | | | | | |
| Black | 95 | OT315...400_ | OHB95J12 | 1SCA022381R0830 | 90 | 0.16 |
| Yellow-red | 95 | OT315...400_ | OHY95J12 | 1SCA022381R1050 | 90 | 0.16 |
| Grey | 95 | OT315...400_ | OHG95J12 | 1SCA022381R0910 | 90 | 0.16 |
| Black | 125 | OT630_ | OHB125J12 | 1SCA022381R1560 | 90 | 0.17 |
| Yellow-red | 125 | OT630_ | OHY125J12 | 1SCA022381R1720 | 90 | 0.17 |
| Grey | 125 | OT630_ | OHG125J12 | 1SCA022381R1640 | 90 | 0.17 |
| Black | 145 | OT630_ | OHB145J12 | 1SCA022381R2110 | 90 | 0.17 |
| Yellow-red | 145 | OT630_ | OHY145J12 | 1SCA022381R2370 | 90 | 0.17 |
| Grey | 145 | OT630_ | OHG145J12 | 1SCA022381R2290 | 90 | 0.17 |
| Black | 2x150 | OT630_ | OHB150J12P | 1SCA022865R9430 | 25 | 0.35 |
| For shaft diameter 12 mm, indication: Test-OFF-ON/Test-0-I | | | | | | |
| Black | 95 | OT315...400_ | OHB95J12T | 1SCA022736R1750 | 90 | 0.16 |
| Yellow-red | 95 | OT315...400_ | OHY95J12T | 1SCA022736R1910 | 90 | 0.16 |
| Black | 125 | OT630_ | OHB125J12T | 1SCA022652R2220 | 90 | 0.17 |
| Yellow-red | 125 | OT630_ | OHY125J12T | 1SCA022652R2310 | 90 | 0.17 |

Door interlocking in ON-position means that the door can not be opened, when the handle is in ON-position.

This can be defeated in IP65 types to allow authorized personnel access for inspection.

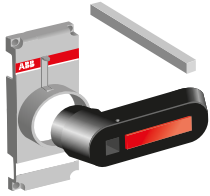
NEMA 4, 4x pistol handles available on request.

Handles padlockable in all positions available on request.

Ordering information

Accessories

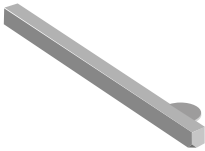
OT_V_
S01997A



Handles for direct mounting

| Colour | Handle length [mm] | Suitable for switches | Type | Order number | Units/ type [pcs] | Weight/ unit [kg] |
|--|--------------------|-----------------------|------------|-----------------|-------------------|-------------------|
| Indication Test-OFF-ON/Test-O-I. | | | | | | |
| Padlockable with three padlocks in OFF-position. Includes shaft and mechanism cover. | | | | | | |
| Black | 65 | OTDC100...250 | OTDV250EK | 1SCA127390R1001 | 1 | 0.10 |
| Red-yellow | 65 | OTDC100...250 | OTDVY250EK | 1SCA127391R1001 | 1 | 0.10 |
| Black | 95 | OT315...400 | OTV400EK | 1SCA022763R2960 | 1 | 0.20 |
| Red-yellow | 95 | OT315...400 | OTVY400EK | 1SCA022772R7830 | 1 | 0.20 |
| Black | 125 | OT630...800 | OTV800EK | 1SCA022804R6340 | 1 | 0.30 |
| Red-yellow | 125 | OT630...800 | OTVY800EK | 1SCA022810R2780 | 1 | 0.30 |

OXS6X_
S01026A

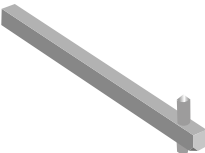


Extended shafts

The type and ordering numbers are for one piece.

| Shaft length [mm] | H [mm] | Type | Order number | Delivery batch [pcs] | Weight/ unit [kg] |
|-------------------|---|------|--------------|----------------------|-------------------|
| |  | | | | |

OSP6X_
S00050A



For selector type handles

Suitable for switches OTDC16...32F, shaft diameter 6 mm

| | | | | | |
|-----|-----------|----------|-----------------|----|------|
| 85 | See | OXS6X85 | 1SCA101647R1001 | 10 | 0.02 |
| 105 | dimension | OXS6X105 | 1SCA108043R1001 | 10 | 0.02 |
| 120 | drawings | OXS6X120 | 1SCA101654R1001 | 10 | 0.03 |
| 130 | | OXS6X130 | 1SCA101655R1001 | 10 | 0.03 |
| 160 | | OXS6X160 | 1SCA101656R1001 | 10 | 0.04 |
| 180 | | OXS6X180 | 1SCA101659R1001 | 10 | 0.04 |
| 250 | | OXS6X250 | 1SCA101660R1001 | 10 | 0.05 |
| 330 | | OXS6X330 | 1SCA101661R1001 | 10 | 0.05 |

For pistol type handles

Suitable for switches OTDC100...250_, shaft diameter 6 mm ¹⁾

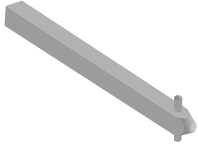
| | | | | | |
|-----|-----------|----------|-----------------|---|------|
| 130 | 109...174 | OSP6X130 | 1SCA022057R0570 | 1 | 0.04 |
| 150 | 129...194 | OSP6X150 | 1SCA022295R5600 | 1 | 0.05 |
| 161 | 140...205 | OSP6X161 | 1SCA022067R1760 | 1 | 0.05 |
| 210 | 189...254 | OSP6X210 | 1SCA022295R6080 | 1 | 0.06 |
| 290 | 269...334 | OSP6X290 | 1SCA022042R6370 | 1 | 0.08 |

¹⁾ Longer shafts on request

Ordering information

Accessories

OXP12X_
S00047A



Extended shafts

The type and ordering numbers are for one piece.

| Shaft length [mm] | H [mm] | Type | Order number | Delivery Weight/ batch unit [pcs] [kg] |
|----------------------|-----------|------|--------------|--|
|----------------------|-----------|------|--------------|--|

For pistol type handles

Suitable for switches OT315...400_, shaft diameter 12 mm

| | | | | |
|-----|-----------|-----------|-----------------|--------|
| 166 | 146...226 | OXP12X166 | 1SCA022325R7100 | 1 0.2 |
| 185 | 165...245 | OXP12X185 | 1SCA022325R6710 | 1 0.2 |
| 250 | 230...310 | OXP12X250 | 1SCA022325R6980 | 1 0.28 |
| 280 | 260...340 | OXP12X280 | 1SCA022137R5140 | 1 0.3 |
| 325 | 305...385 | OXP12X325 | 1SCA022042R5810 | 1 0.36 |
| 395 | 445...525 | OXP12X395 | 1SCA022042R5990 | 1 0.43 |
| 465 | 439...519 | OXP12X465 | 1SCA022042R6020 | 1 0.51 |
| 535 | 515...595 | OXP12X535 | 1SCA022042R6110 | 1 0.59 |

Suitable for switches OT630_, shaft diameter 12 mm

| | | | | |
|-----|-----------|-----------|-----------------|--------|
| 250 | 230...345 | OXP12X250 | 1SCA022325R6980 | 1 0.28 |
| 280 | 260...375 | OXP12X280 | 1SCA022137R5140 | 1 0.3 |
| 325 | 305...420 | OXP12X325 | 1SCA022042R5810 | 1 0.36 |
| 395 | 375...490 | OXP12X395 | 1SCA022042R5990 | 1 0.43 |
| 465 | 445...560 | OXP12X465 | 1SCA022042R6020 | 1 0.51 |
| 535 | 515...630 | OXP12X535 | 1SCA022042R6110 | 1 0.59 |

Suitable for switches OT630E_P31 with OHB150J12P handle, shaft diameter 12 mm

| | | | | |
|-----|-----------|-----------|-----------------|--------|
| 250 | 222...336 | OXP12X250 | 1SCA022325R6980 | 1 0.28 |
| 280 | 252...366 | OXP12X280 | 1SCA022137R5140 | 1 0.3 |
| 325 | 297...411 | OXP12X325 | 1SCA022042R5810 | 1 0.36 |
| 395 | 367...481 | OXP12X395 | 1SCA022042R5990 | 1 0.43 |
| 465 | 437...551 | OXP12X465 | 1SCA022042R6020 | 1 0.51 |
| 535 | 507...621 | OXP12X535 | 1SCA022042R6110 | 1 0.59 |

Ordering information

Accessories

OXP_-45
S00669A



Extended shafts

Twisted shafts for pistol type handles

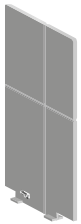
The shaft position is rotated 45 degrees.


The type and ordering numbers are for one piece.

OEZXY91
S07230



OTDCB250/6
KE00052



| Shaft length [mm] |  [mm] | Type | Order number | Delivery Weight/ | |
|--|--|---------------|-----------------|------------------|--------------|
| | | | | batch [pcs] | unit [kg] |
| Suitable for switches OTDC100...250_, shaft diameter 6 mm | | | | | |
| 130 | 109...174 | OX P6X130-45 | 1SCA022355R9110 | 1 | 0.04 |
| 150 | 129...194 | OX P6X150-45 | 1SCA022294R4400 | 1 | 0.05 |
| 210 | 189...254 | OX P6X210-45 | 1SCA022294R4230 | 1 | 0.06 |
| 290 | 269...334 | OX P6X290-45 | 1SCA022304R4290 | 1 | 0.08 |
| Suitable for switches OT315...400_, shaft diameter 12 mm | | | | | |
| 250 | 230...310 | OX P12X250-45 | 1SCA022293R9400 | 1 | 0.28 |
| 280 | 260...340 | OX P12X280-45 | 1SCA022382R0800 | 1 | 0.3 |
| 325 | 305...385 | OX P12X325-45 | 1SCA022304R4450 | 1 | 0.36 |
| 395 | 445...525 | OX P12X395-45 | 1SCA022749R0640 | 1 | 0.43 |
| 465 | 439...519 | OX P12X465-45 | 1SCA022423R1770 | 1 | 0.51 |
| 535 | 515...595 | OX P12X535-45 | 1SCA022723R2940 | 1 | 0.59 |

Mounting accessories

Short-circuit link

Includes as standard in types OTDC100...200US02.

| Shaft length [mm] | Type | Order number | Units Weight/ | |
|----------------------|---------|-----------------|---------------|--------------|
| | | | type [pcs] | unit [kg] |
| OTDC100..250 | OEZXY91 | 1SCA125290R1001 | 1 | |

Phase separators

Grey plastic plate for maintaining 1" clearance between the phases without terminal shrouds.

Snap-on mounting. Includes as standard in OTDC100...200U_ types.

| Shaft length [mm] | Type | Order number | Units Weight/ | |
|----------------------|------------|-----------------|---------------|--------------|
| | | | type [pcs] | unit [kg] |
| OTDC100..250 | OTDCB250/6 | 1SCA125532R1001 | 6 | |

Ordering information

Accessories

OHZX10
S01432A



Shaft accessories

| Colour | Type | Order number | Delivery Weight/ | |
|--------|------|--------------|------------------|------|
| | | | batch | unit |
| | | | [pcs] | [kg] |

Shaft alignment ring

Improves the handle operation if a handle and a shaft have been poorly aligned. The type and the ordering numbers are for one piece.

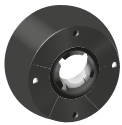
For pistol type handles OH_65...275J6...12

| | | | | |
|-------|--------|-----------------|----|------|
| Black | OHZX10 | 1SCA022661R3610 | 10 | 0.23 |
|-------|--------|-----------------|----|------|

For selector type handles OH_1...3

| | | | | |
|-------|--------|-----------------|----|------|
| Black | OHZX11 | 1SCA022708R3610 | 10 | 0.23 |
|-------|--------|-----------------|----|------|

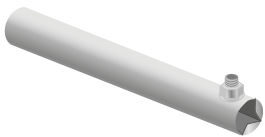
OHZX14
S02194A



Extension ring for pistol type handles OHB_

| | | | | |
|-------|--------|-----------------|---|------|
| Black | OHZX14 | 1SCA022851R6590 | 1 | 0.06 |
|-------|--------|-----------------|---|------|

OXT20X210X
S02211A

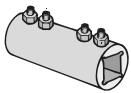


Shaft tube

Supporting 12 mm shafts longer than 280 mm.

| | | | | |
|--|------------|-----------------|---|-----|
| | OXT20x210X | 1SCA103684R1001 | 1 | 1.5 |
|--|------------|-----------------|---|-----|

OETLZX95, OESAZX167
S00080A

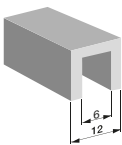


Shaft extension socket

For extending the shaft of combination attachment. The type and the ordering numbers are for one piece.

| Shaft diameter [mm] | Type | Order number | Units/ Weight/ | |
|------------------------|-----------|-----------------|----------------|------|
| | | | unit | type |
| | | | [pcs] | [kg] |
| 6 | OESAZX167 | 1SCA022190R1560 | 1 | 0.03 |
| 12 | OETLZX95 | 1SCA022083R5620 | 1 | 0.04 |

OETLZK19
S00670C



Adapter for extension socket

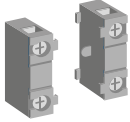
The adapter can be placed inside the extension socket OETLZX95.

| | | | | |
|---|----------|-----------------|---|------|
| 6 | OETLZK19 | 1SCA022093R1850 | 1 | 0.02 |
|---|----------|-----------------|---|------|

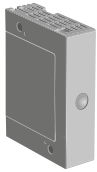
Ordering information

Accessories

OA1G, OA3G01
S00261A



OEA28
S01641A



Auxiliary contact blocks, IP20

Contact numbering according to EN 50013.
The type and the ordering numbers are for one piece.

| Suitable for switches | Function | Type | Order number | Delivery batch ²⁾ [pcs] | Weight/unit [kg] |
|-----------------------|----------|------|--------------|------------------------------------|------------------|
|-----------------------|----------|------|--------------|------------------------------------|------------------|

Mounting on the left side of the switch or under the mechanism cover

Mounting on the left side of the switch:

Max. 8 auxiliary contact blocks with the OEA28 module.

Mounting under the mechanism cover:

OTDC100...250: Max. 4 test contacts or 2 test contacts + 2 test indication contacts.¹⁾

OT315...630: Max. 4 test contacts + 4 test indication contacts.¹⁾

The test contacts can be used as standard auxiliary contacts as well.

| | | | | | |
|----------------------------|-----|--------|-----------------|----|------|
| OTDC100...250, OT315...630 | 1NO | OA1G10 | 1SCA022353R4970 | 10 | 0.03 |
| OTDC100...250, OT315...630 | 1NC | OA3G01 | 1SCA022456R7410 | 10 | 0.03 |

Module for auxiliary contacts

Screw mounting to the left side of the switch.

| Suitable for switches | Type | Order number | Units/type [pcs] | Weight/unit [kg] |
|---------------------------|-------|-----------------|------------------|------------------|
| OTDC100..250, OT315...630 | OEA28 | 1SCA022714R8810 | 1 | 0.04 |

¹⁾ Contact numbering:

(83) (43) (53) 13 21 (61) (31) (71)
(84) (44) (54) 14 22 (62) (32) (72)

²⁾ Auxiliary contacts OA1G_ are available in larger packing as well.

A bulk package includes 50 auxiliary contacts. Type number: add a suffix: /B, e.g. OA1G01/B.

Early break type auxiliary contacts means that in the switches, the NO aux.contacts break before the main contacts open.

Performance data according to IEC 60947-5-1

| For OA1G_, OA3G_ | | | | | | |
|------------------|----------------|--------|--------|-------|--------|-------|
| Ue/[V] | AC15 Ie/[A] | Ue/[V] | DC12 | | DC13 | |
| | | | Ie/[A] | P/[W] | Ie/[A] | P/[W] |
| 230 | 6 | 24 | 10 | 240 | 2 | 50 |
| 400 | 4 | 72 | 4 | 290 | 0.8 | 60 |
| 415 | 4 | 125 | 2 | 250 | 0.55 | 70 |
| 690 | 2 | 250 | 0.55 | 140 | 0.27 | 70 |
| | | 440 | 0.1 | 44 | | |